

# IPC Hardware Instruction

Overseas Sales Department

# IPC 8 Series



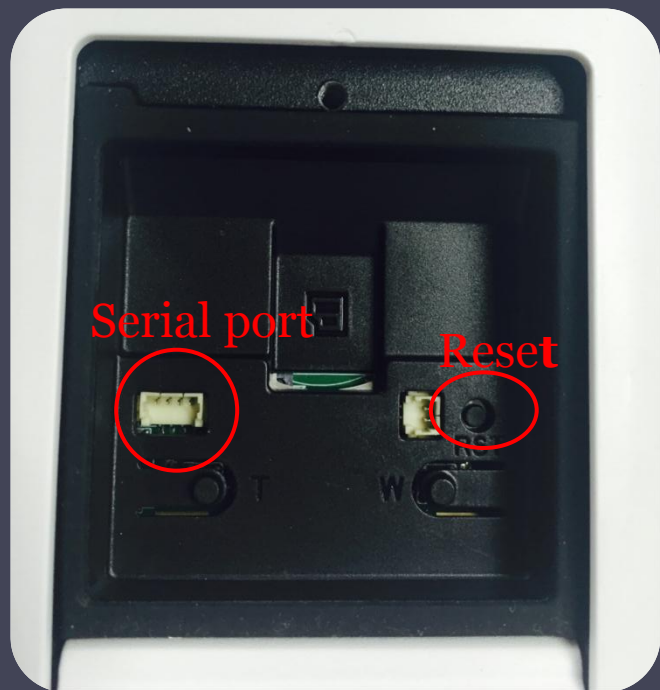
# HF81230/81200/8281E



Reset: Press the reset button for 5 seconds.

Serial port connection: Please use connector(1.2.17.12.0011) and weld it on the package of the serial port.

# HFW81230/81200/8630/8331/ 8281/8231/8232E-Z



Reset: Press the reset button for 5 seconds.

Serial port connection: Please use connector(1.2.17.12.0011) and weld it on the package of the serial port.

# HDBW81230/81200/8630/8331/8281 /8231/8232E-Z



Reset: Press the reset button for 5 seconds.

Serial port connection: Please use connector(1.2.17.12.0011) and weld it on the package of the serial port.

# IPC 5 Series





# HF5231/5431/5631/5831E-ZE(Z5E)



Reset: Press the reset button for 5 seconds.

Serial port connection: Please use connector(1.2.17.12.0011) and weld it on the package of the serial port.

# HF5231E-Z12E



Reset: Press the reset button for 5 seconds.

Serial port connection: Please use connector(1.2.17.12.0011) and weld it on the package of the serial port.



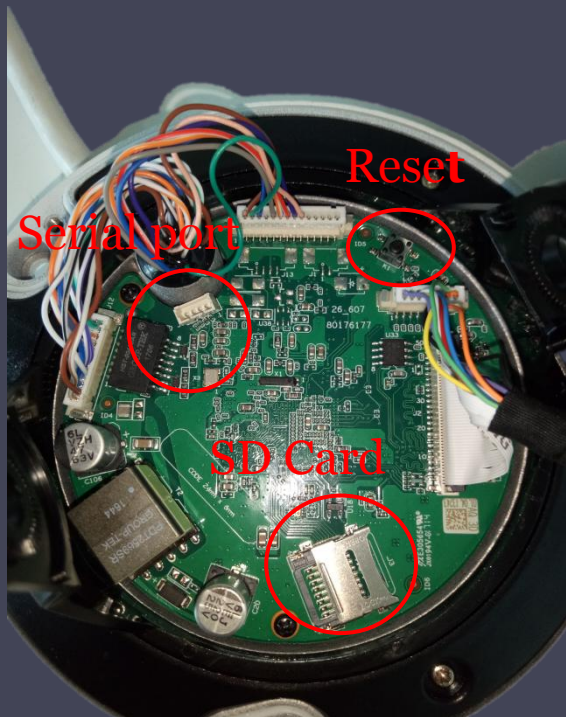
# HF5231/5431E-E



Reset: Press the reset button for 5 seconds.

Serial port connection: Please use connector(1.2.17.12.0011) and weld it on the package of the serial port.

# HDBW5231/5431/5631/5831R-ZE



Reset: Press the reset button for 5 seconds.

Serial port connection: Please use connector(1.2.17.12.0011) and weld it on the package of the serial port.

# HDBW5231/5431/5631/5831E-ZE(Z5E)



Reset: Press the reset button for 5 seconds.

Serial port connection: Please use connector(1.2.17.12.0011) and weld it on the package of the serial port.

# HDW5231/5431/5631/5831R-ZE



Reset: Press the reset button for 5 seconds.

Serial port connection: Please use connector(1.2.17.12.0011) and weld it on the package of the serial port.

# IPC 4 Series



# HF4421/4221/4220/4120S

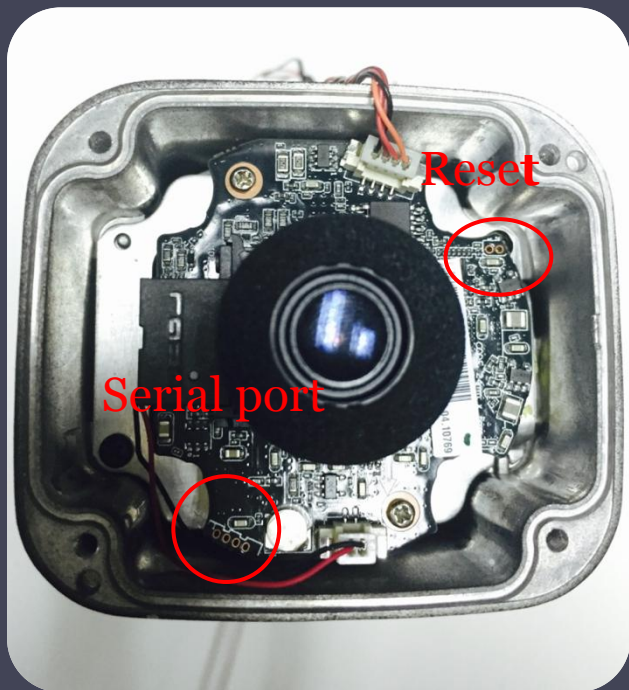


Reset: Make short circuit between two small holes on the PCB for 5 seconds.

Serial port connection: Please use connector(1.2.17.12.0011) and weld it on the package of the serial port.



# HF4421/4221/4220/4120E



Reset: Make short circuit between two small holes on the PCB for 5 seconds.

Serial port connection: Please use connector(1.2.17.12.0011) and weld it on the package of the serial port.



# HFW4830/4431/4231E-S



Reset: Press the button for 5 seconds.

Serial port connection: Please use connector(1.2.17.12.0011) and weld it on the package of the serial port.

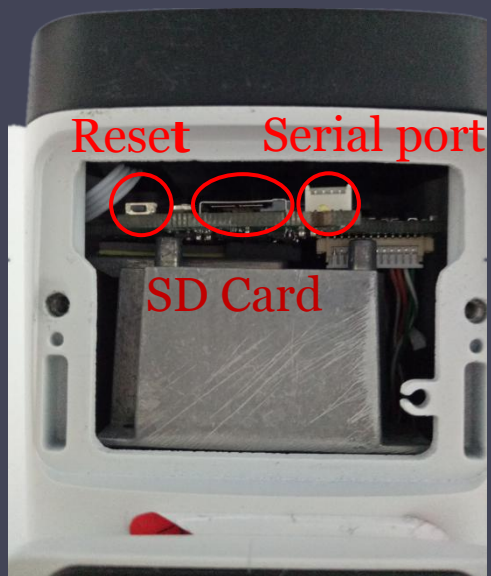
# HF4231/4431/4631/4831E-SE



Reset: Press the reset button for 5 seconds.

Serial port connection: Please use connector(1.2.17.12.0011) and weld it on the package of the serial port.

# HFW4231/4431/4631/4831T-ASE



Reset: Press the reset button for 5 seconds.

Serial port connection: Please use connector(1.2.17.12.0011) and weld it on the package of the serial port.

# HDBW4421/4221/4220/4120/4 830/4431/4231E-AS



Reset: Press the reset button for 5 seconds.

Serial port connection: Please use connector(1.2.17.12.0011) and weld it on the package of the serial port.

# HDBW4231/4431/4631/4831E-ASE



Reset: Press the reset button for 5 seconds.

Serial port connection: Please use connector(1.2.17.12.0011) and weld it on the package of the serial port.

# HDBW4421/4221/4220/4120F



Reset: Press the reset button for 5 seconds.

Serial port connection: Please use connector(1.2.17.12.0011) and weld it on the package of the serial port.

# HDBW4431/4231F-AS

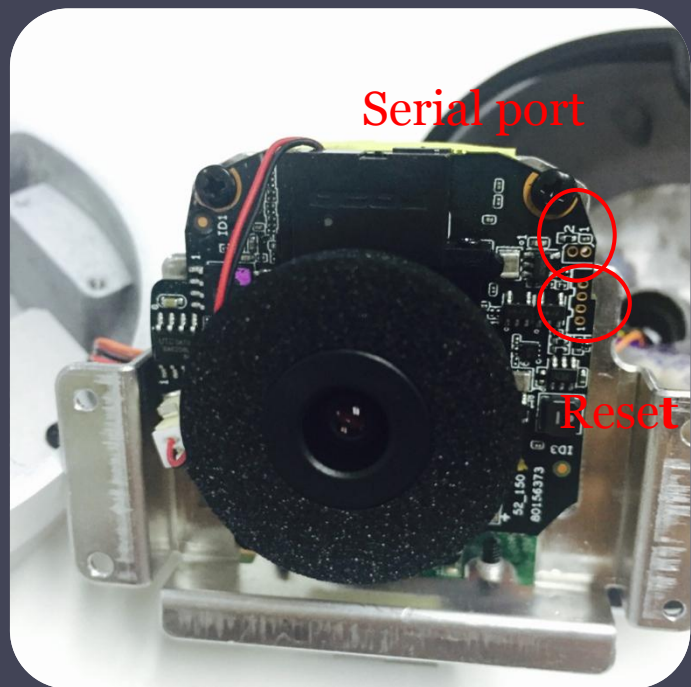


Reset: Press the reset button for 5 seconds.

Serial port connection: Please use connector(1.2.17.12.0011) and weld it on the package of the serial port.



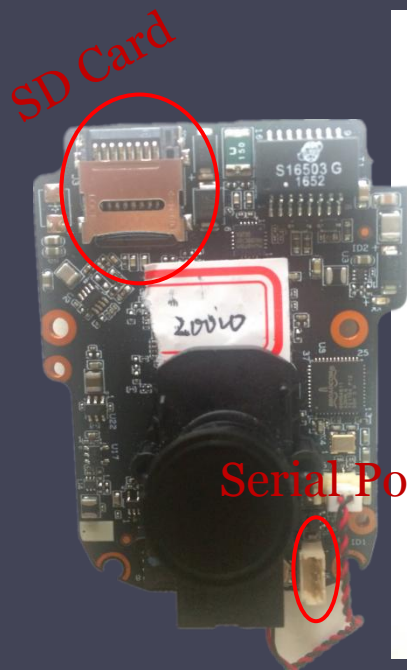
# HDW4421/4221/4220/4120E



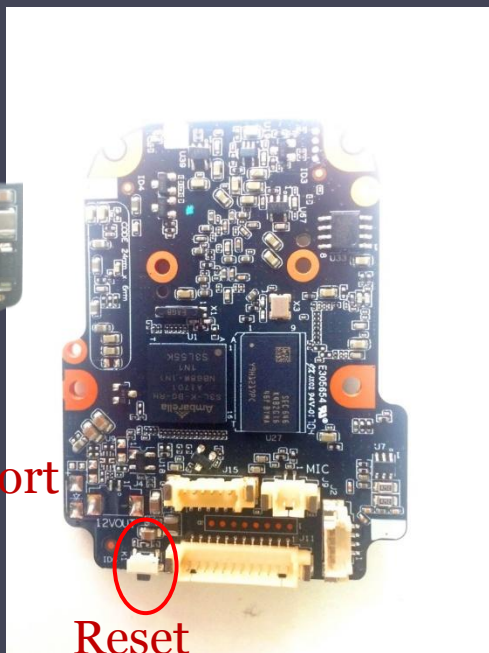
Reset: Make short circuit between two small holes on the PCB for 5 seconds.

Serial port connection: Please use connector(1.2.17.12.0011) and weld it on the package of the serial port.

# HDW4830/4431/4231EM-AS



正面

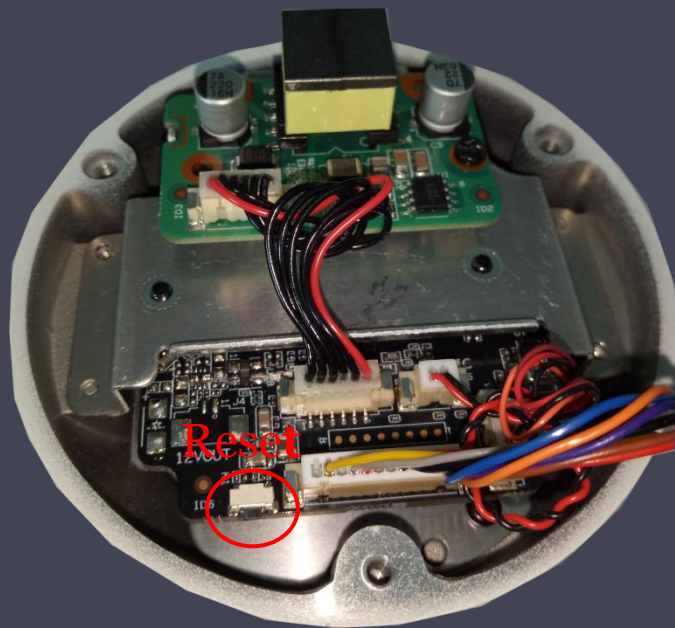


反面

Reset: Press the reset button for 5 seconds.

Serial port connection: Please use connector(1.2.17.12.0011) and weld it on the package of the serial port.

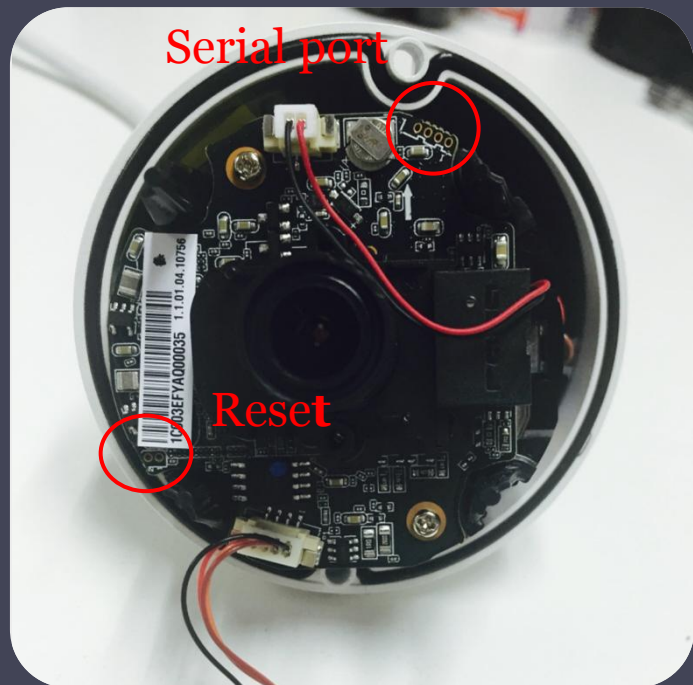
# HDW4231/4431/4631/4831EM-ASE



Reset: Press the reset button for 5 seconds.

Serial port connection: Please use connector(1.2.17.12.0011) and weld it on the package of the serial port.

# HDW4431/4231/4421/4221/4220/ 4120M



Reset: Make short circuit between two small holes on the PCB for 5 seconds.

Serial port connection: Please use connector(1.2.17.12.0011) and weld it on the package of the serial port.

# HDB4231/4431G-AS



Reset: Press the reset button for 5 seconds.

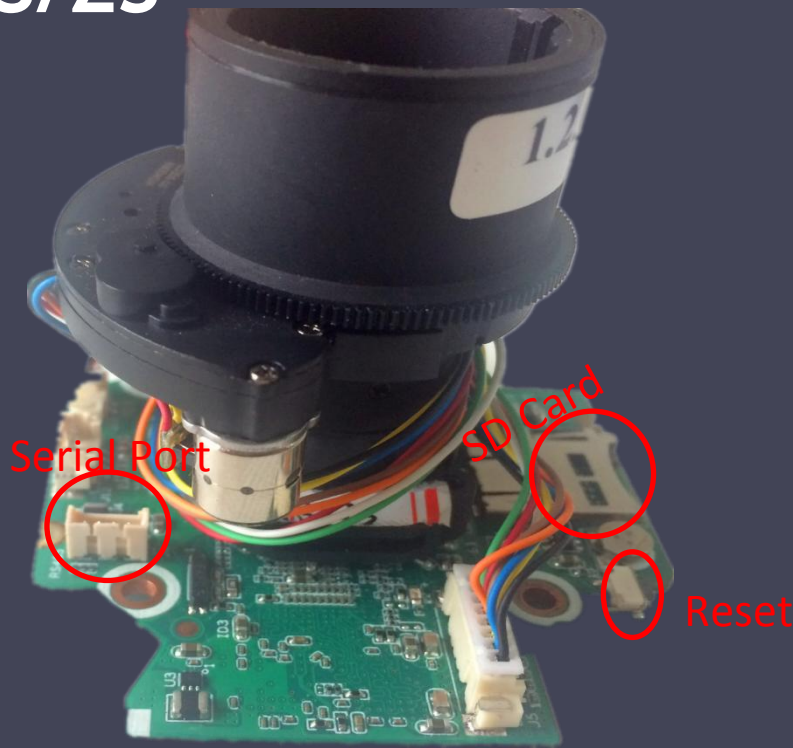
Serial port connection: Please use connector(1.2.17.12.0011) and weld it on the package of the serial port.



# IPC 2 Series

A low-angle photograph of a bare tree against a cloudy sky with a bright sun. Power lines and a street lamp are visible in the foreground.

# HFW2230/2320/2221/2121R-VFS/ZS



Reset: Press the reset button for 5 seconds.

Serial port connection: Please use connector(1.2.17.12.0011) and weld it on the package of the serial port.



# HF2231/2431R-VFS/ZS



Reset: Press the reset button for 5 seconds.

Serial port connection: Please use connector(1.2.17.12.0011) and weld it on the package of the serial port.

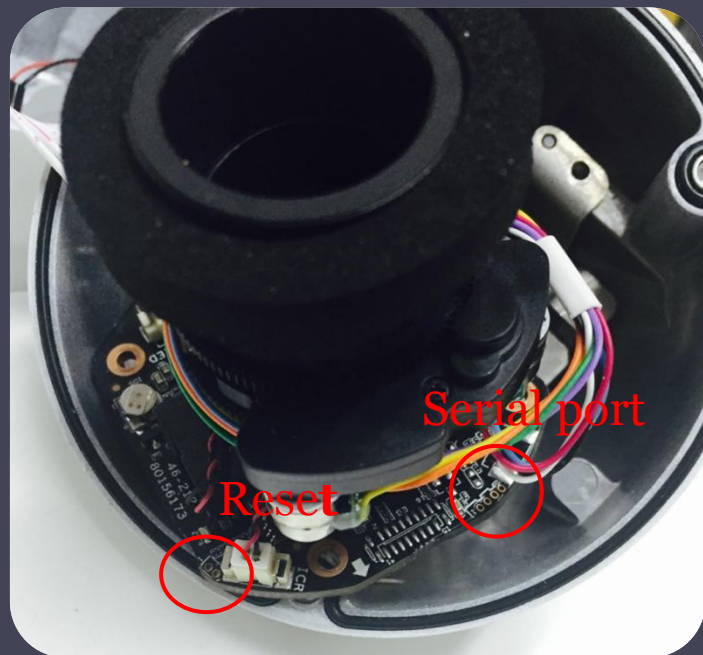
# HDBW2431/2231/2230/2320/2221/ 2121R-VFS/ZS



Reset: Press the reset button for 5 seconds.

Serial port connection: Please use connector(1.2.17.12.0011) and weld it on the package of the serial port.

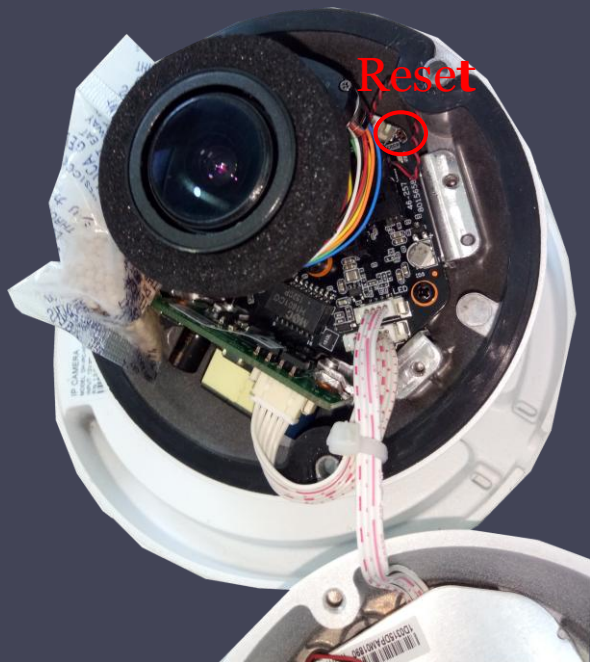
# HDW2320/2221/2121R-Z



Reset: Make short circuit between two small holes on the PCB for 5 seconds.

Serial port connection: Please use connector(1.2.17.12.0011) and weld it on the package of the serial port.

# HDW2230/2231/2431R-ZS/VFS



Reset: Make short circuit between two small holes on the PCB for 5 seconds.

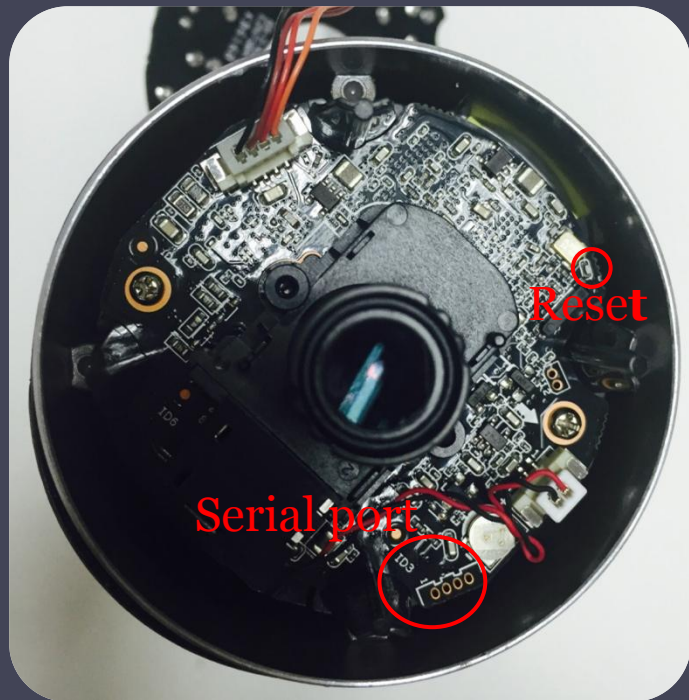
Serial port connection: Please use connector(1.2.17.12.0011) and weld it on the package of the serial port.



# IPC 1 Series

A low-angle photograph of a bare tree against a cloudy sky with a bright sun. Power lines and a street lamp are visible in the foreground.

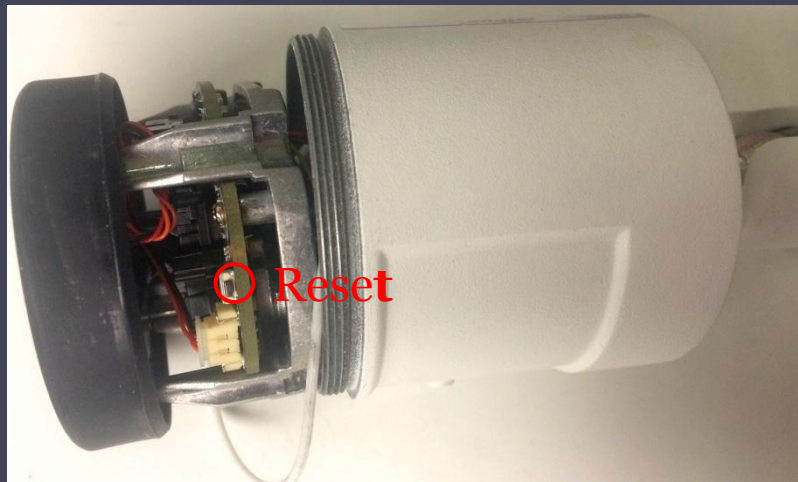
# HFW1320/1220/1120/1020S



Reset: Press the reset button for 5 seconds.

Serial port connection: Please use connector(1.2.17.12.0011) and weld it on the package of the serial port.

# HFW1431/1230S

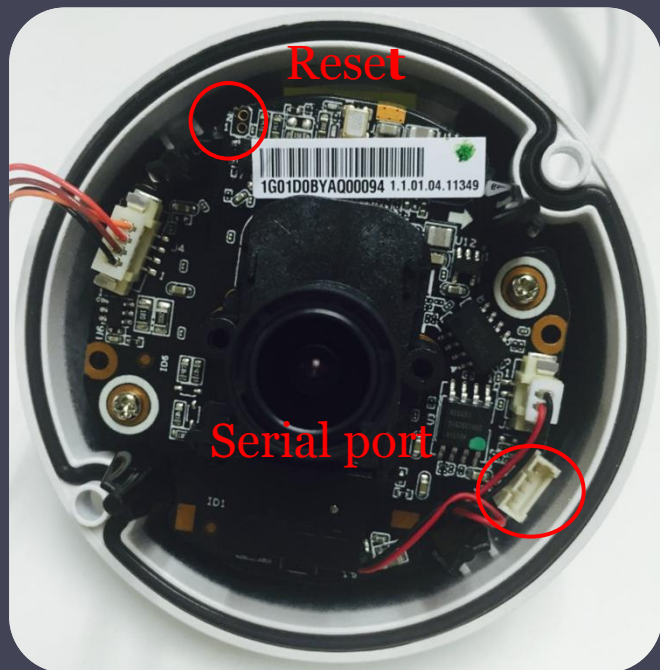


Reset: Press the reset button for 5 seconds.

Serial port connection: Please use connector(1.2.17.12.0011) and weld it on the package of the serial port.



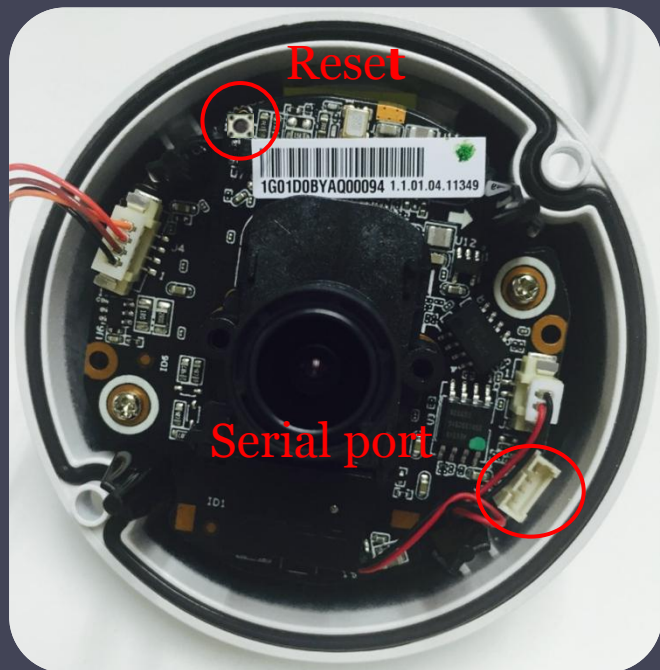
# HDW1320/1220/1120/1020S



Reset: Make short circuit between two small holes on the PCB for 5 seconds.

Serial port connection: Please use connector(1.2.17.12.0011) and weld it on the package of the serial port.

# HDW1431/1230S

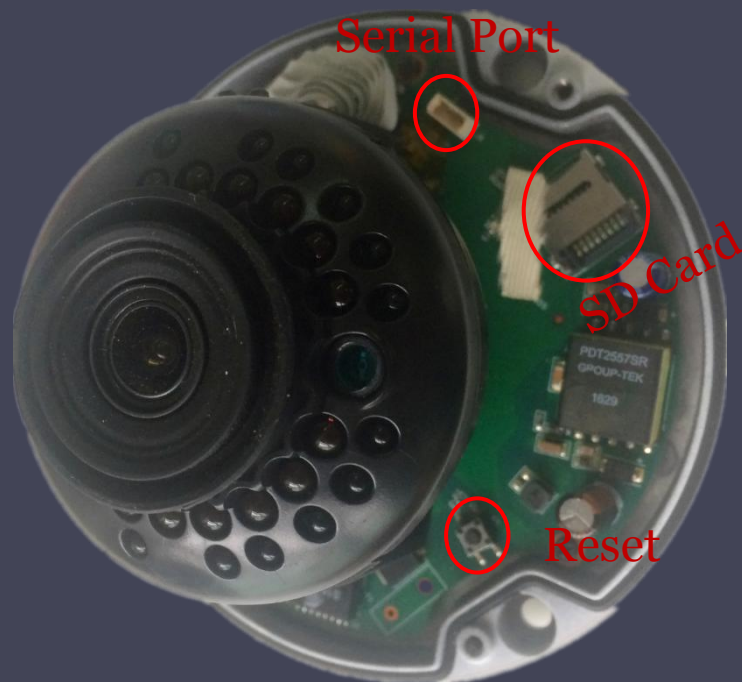


Reset: Make short circuit between two small holes on the PCB for 5 seconds.

Serial port connection: Please use connector(1.2.17.12.0011) and weld it on the package of the serial port.



# HDBW1230E ( -S ) /1431E ( -S ) /1320E



Reset: Press the reset button for 5 seconds.

Serial port connection: Please use connector(1.2.17.12.0011) and weld it on the package of the serial port.

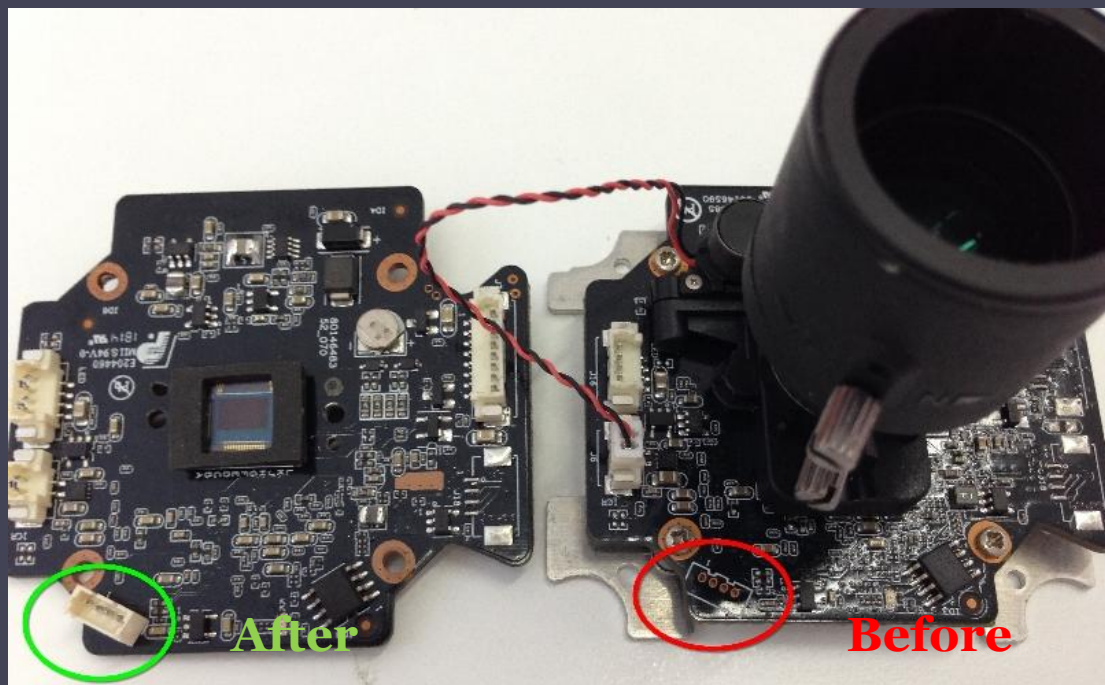
1. Find a connector

Material number: 1.2.17.12.0011

2. Weld it on the package of the serial port

Pay attention that the two gaps on the lateral of the connector should aim the two pits on the package silk print of the PCB.

3. Insert a serial line on the connector





# THANKS!

[www.dahuatech.com](http://www.dahuatech.com)